

## Wolf Studios Wales Cardiff, SE Wales

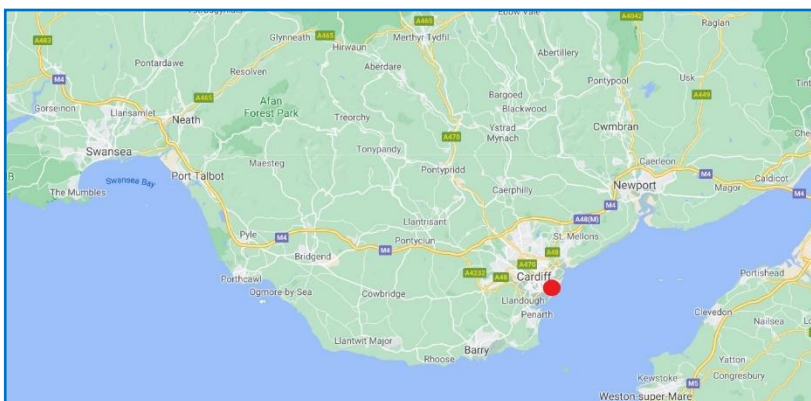


State of the art facility in Cardiff, currently home to Bad Wolf's television drama slate.

- Stage 1: 21,661 sq ft (height: 32- 41 ft)
- Stage 2: 14,531 sq ft (height: 35- 41 ft)
- Stage 3: 14,531 sq ft (height: 35- 41 ft)
- Stage 4/5: 51,135 sq ft (height: 35- 41 ft)
- Stage 6: 24,497 sq ft (height: 57.5 ft)

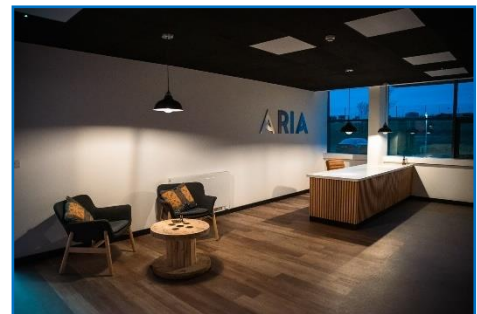
Includes flexible production offices, auxiliary rooms plus costume and props storage. Close to Cardiff city centre and the Bay area.

[What3Words](#)



## ARIA Film Studios

Ynys Môn / Anglesey, North Wales

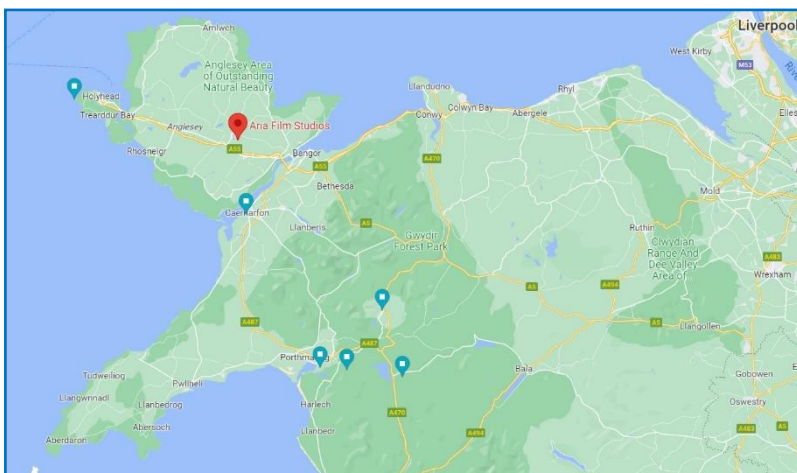


Two outstanding acoustic stages in the heart of North Wales are only a stone's throw from stunning, diverse mountain ranges and seascapes. Facilities include production offices, workshops and green room.

Stage 1 - 9,500 sq ft (height: 6m to 9m / 20ft to 29ft)

Stage 2 - 6,500 sq ft (height: 4.5 m / 15 ft)

[What3Words](#)



**ARIA**  
FILM STUDIOS

## Dragon Studios

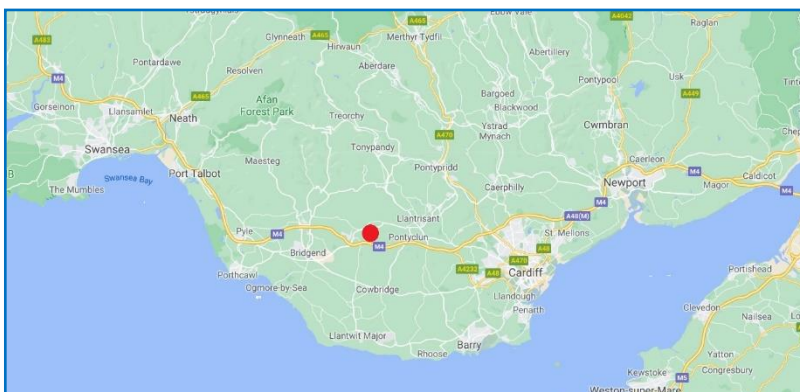
Nr. Bridgend, SE Wales



Five purpose-built studios on a 100-acre site featuring hubs built to create a system of support for productions, ideal spaces suitable for executive offices, post-production, editing, art department, costume and make-up.

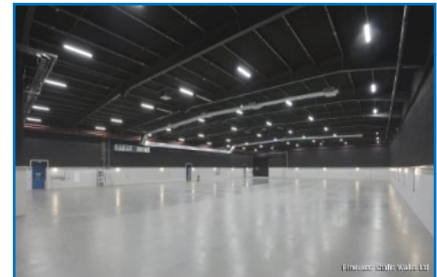
- Stage 1, 3 and 4 - 10,000 sq ft (34 ft clear height / 10.2m)
- Stage 2 - 20,000 sq ft (34 ft clear height / 10.2m)
- Stage 5 - 28,000 sq ft (53 ft clear height / 16m)

[What3Words](#)



## Great Point—Seren Stiwdios

Cardiff, SE Wales

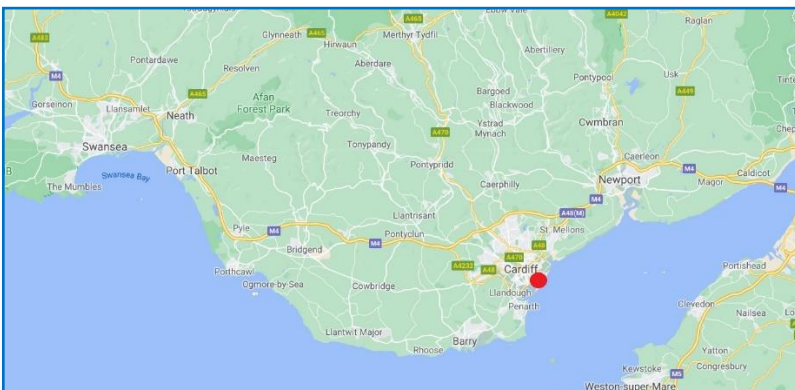
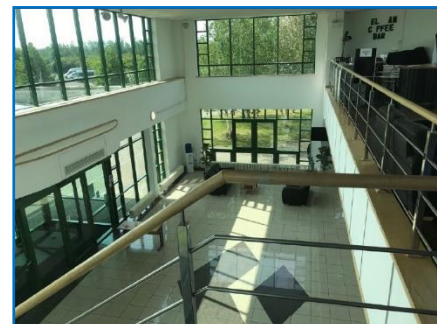


Great Point - Seren Stiwdios offers 4 x stages, each of which has a working height of 23 ft (7.1m):

- Stages 1 & 2 - approx. 20,000 sq ft each
- Stage 3 - 15,900 sq ft
- Stage 4 - 16,500 sq ft

Also production office and workshop space available plus ample parking. On-site tenants such as ADF (vehicles), Movietech Camera Rentals Ltd, Real SFX, Oh So Small Agency, Lubas Medical and Aerial Craft etc.

[What3Words](#)



[Enfys](#)

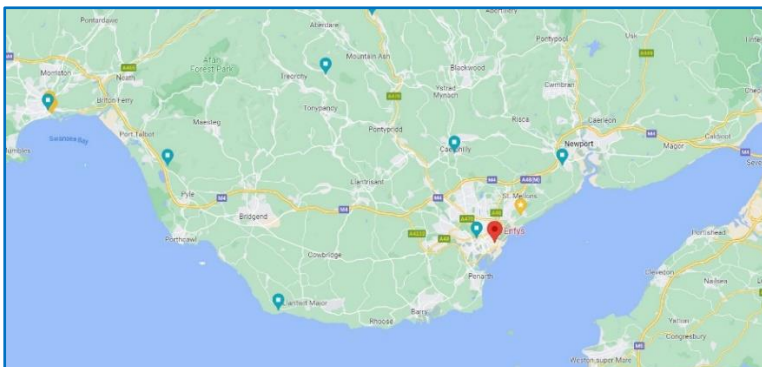
Cardiff, SE Wales



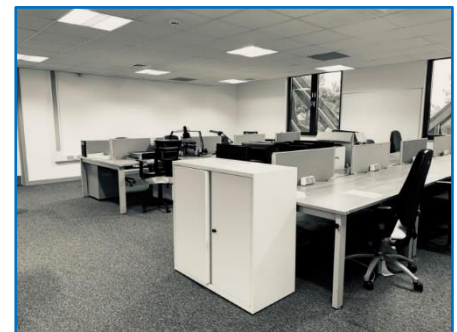
Two fully sound proofed TV Studios available for dry hire or can supply a fully crewed multi camera set up. Also have CK Green facilities with infinity curve.

- Studio 1 - 4,700 square feet  
Cyc Rail Height - 4.88m / Height to Grid - 5.33m
- Studio 2 - 1,100 square feet  
Cyc Rail Height - 4.90m / Height to Grid - 5.25m

[What3Words](#)



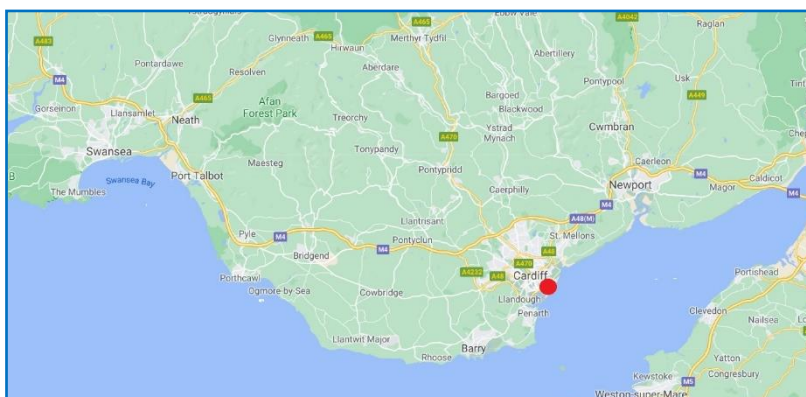
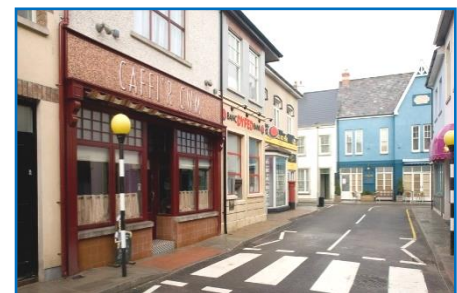
## Roath Lock Studios Cardiff Bay, SE Wales



4 spacious stages totalling 33,658 sq. ft (3,129m<sup>2</sup>), plus office space, meeting rooms, set and prop storage, hair/make-up and wardrobe rooms.

- Stage 1: 8,699 sq ft / 809m<sup>2</sup> (height: 24.2 ft / 7.4m)
- Stage 2: 5,101 sq ft / 474m<sup>2</sup> (height: 24.2 ft / 7.4m)
- Stage 3: 7,539 sq. ft / 701m<sup>2</sup> (height: 24.2 ft / 7.4m)
- Stage 4: 12,318 sq ft /1,145m<sup>2</sup> (height: 38.7 ft / 11.8m)

[What3Words](#)



## Queensway Meadows Newport, SE Wales



Offering large open plan offices; catering kitchen & canteen area; make-up, costume & dressing rooms; backlot & large car park. Working height 5.5m (18 ft).

Studio 1 - 16,172 sq ft (incl. paint room)

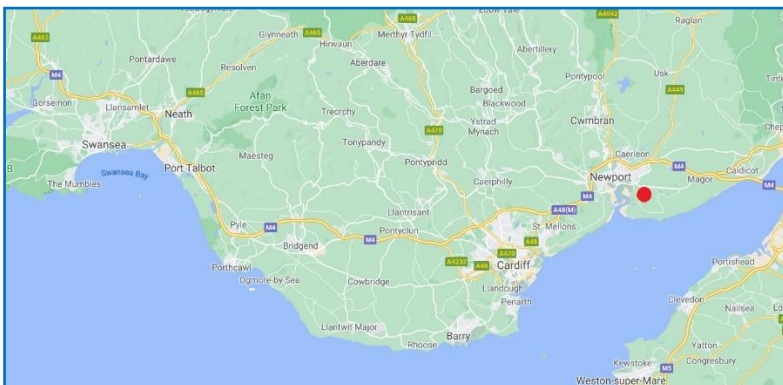
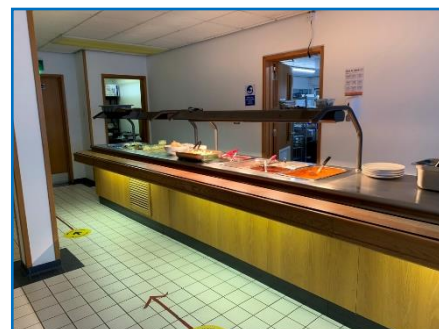
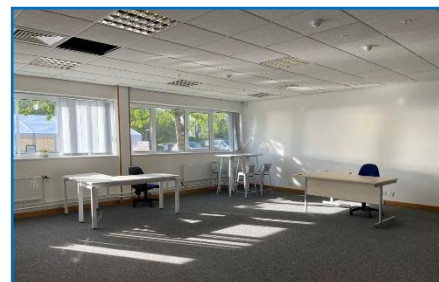
Studio 2 - 12,498 sq ft

Studio 3 - 12,771 sq ft

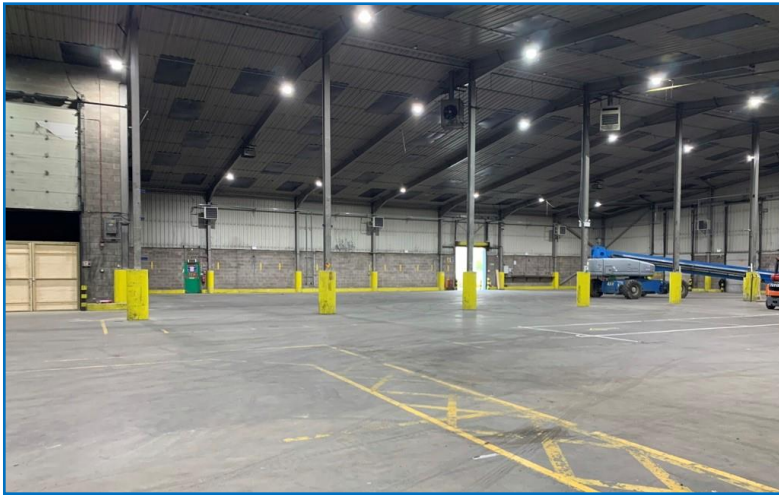
Studio 4 - 39,245 sq ft (incl. substation)

Studio 5 - 33,948 sq ft

[What3Words](#)



## Cartref (Unit 4, Nash Mead) Newport, SE Wales

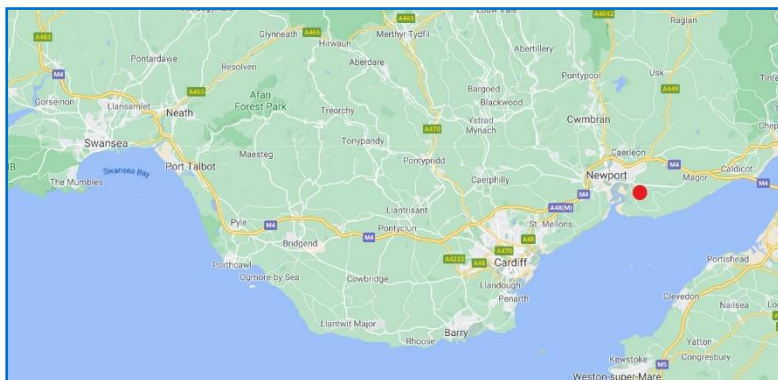


Build space within detached warehouse on self-contained site with security gatehouse. Two-storey office facilities with ancillary and storage space plus on-site parking for cars and HGV. An additional workshop space of 12,400 sq ft is also available nearby. Previously used for HETV dramas *Sex Education* and *War of the Worlds*.

Stage A: 1,782 sq m (19,181 sq ft)

Stage B: 1,495 sq m (16,002 sq ft)

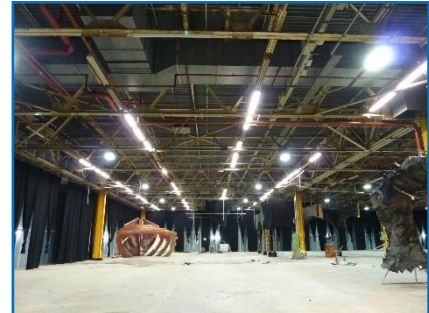
[What3Words](#)





## Bay Studios

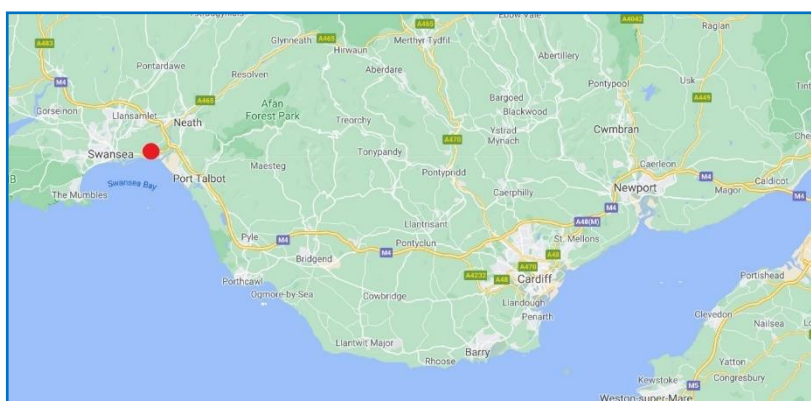
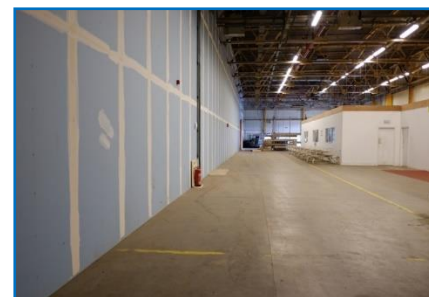
Nr Swansea, South West Wales



Previously home to three seasons of *Da Vinci's Demons* for Starz / BBC Worldwide as well as the Amazon Prime series *The Collection*. The vast former car parts factory offers studio space with standalone two storey office blocks, workshops, props storage, hard standing backlot and ample parking. Situated on the main arterial route into Swansea City Centre with good access to the M4 motorway.

- Total of 260,000 sq ft (24,619 sq m)
- Minimum eaves height of 6.1m

[What3Words](#)



**BAY STUDIOS**   
**STIWDIO'R BAE**